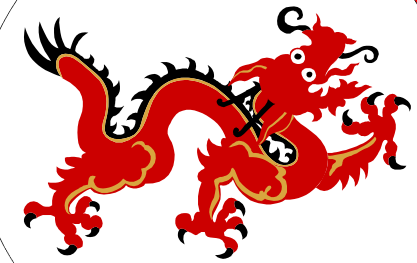
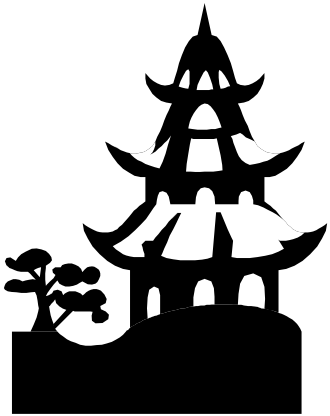


Japanese Etiquette

Knowing how to bow in Japan might help you while you are traveling. Bowing (ojigi) is a very important custom in Japan. Japanese people bow all the time. Most commonly, they greet each other by bowing instead of handshaking. It is impolite not to return a bow to whoever bowed to you. Japanese people might be uncomfortable with any physical forms of contact although they might be used to shaking hands with westerners.

Bowing has many functions in one. It expresses the feeling of respect, thanking, apologizing, greeting, and so on. It's a convenient and important custom for you to learn. You can bow, when you say, "Thank you", "Sorry", "Hello", "Good bye", "Congratulations", "Excuse me", "Good night", "Good Morning", and more.

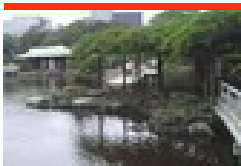


Tokyo, Japan

Japanese Culture & Attractions

Exotic Japanese culture attracts many travelers to Japan from around the world. Even though you aren't visiting Japan, you might be interested in learning various cultural aspects of Japan with these resources.

Japanese gardens are great attractions in Japan. Visiting a Japanese garden might be one of things you would like to do while you are in Japan. There are three the most beautiful landscape Japanese gardens. Spend a whole day in one of the gardens and enjoy Japanese landscapes.

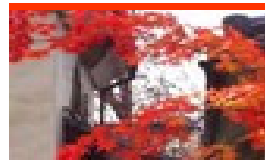


Observing various aspects of Japanese arts is one of the reasons for visiting Japan. Here are some forms of Japanese arts, including Japanese tatoo, samurai sword, anime, and more.



What to Do in Japan?

1. Events and Festivals in Japan
2. Cherry Blossoms
3. Theme Parks
4. Hot Springs
5. Fall Foliages
6. Entertainment
7. Japan Tours
8. Attractions by Region
9. Attractions by City
10. Sports and Outdoor Activities



Map of Tokyo & Cities



Cost of Trip—Roundtrip

Atlanta GA to Tokyo
Charlotte NC to Tokyo
St. Louis MO to Tokyo

- \$548.00-\$981.00



Places to Stay

Where would you like to stay in Japan? You have many choices. There are nice hotels, business hotels, capsule hotels, guest houses, Japanese inns, and more.

Luxury Hotels

Park Hyatt Tokyo \$685.00-\$832.00
Ritz Carlton Tokyo \$544.00-\$750.00
The Westin Tokyo \$378.00-\$428.00

