



COLOR GELS®

LEVEL & DESCRIPTOR



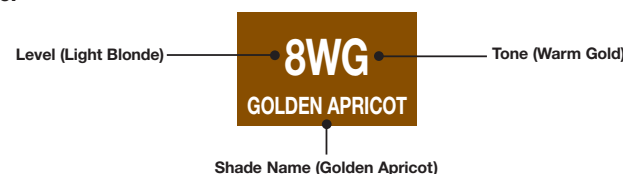
	GREEN	NATURAL ASH	NATURAL	NATURAL WARM	NATURAL GOLD	WARM GOLD	RED / ORANGE	RED	RUBY BROWN	RED / VIOLET
10		10NA Silk	10N Crème Latté	10NW Macadamia Nut	10NG Honey	10WG Crème Brulée				
9		9NA Platinum Ice	9N Café au Lait	9NW Irish Creme	9NG Vanilla Creme		9RO Papaya			
8	8GN Ivy	8NA Mojave	8N Sesame	8NW Safari	8NG Sunflower	8WG Golden Apricot		8R Sun Fire		
7		7NA Mirage	7N Bamboo	7NW Chestnut	7NG Saffron		7RO Marigold	7R Flame		
6	6GN Moss	6NA Moroccan Sand	6N Suede	6NW Brandy	6NG St. Tropez	6WG Mango	6RO Bonfire	6R Rocket Fire		
5		5NA Walnut	5N Coffee Bean	5NW Cappuccino	5NG Caramel		5RO Paprika		5RB Manzanita	5RV Scarlett
4	4GN Forest	4NA Chicory	4N Hazelnut	4NW Maple	4NG Pecan	4WG Sun Tea		4R Lava	4RB Mulberry	4RV Cabernet
3			3N Espresso	3NW Mocha Java					3RB Mahogany	
2				2NW Chocolate						
1				1NW Midnight						

Swatches shown on white hair

UNDERSTANDING THE LABEL

COLOR GELS is available in a 2 oz. (60ml) bottle. Each COLOR GELS shade is identified by a number, which indicates level, and one or two capital letters that indicate the tone of the shade.

Example:



COLOR GELS LEVEL SYSTEM CHART

LEVEL	DESCRIPTION	UNDERTONE	CORRECTIVE TONE
10	Ultra Pale Blonde	Pale Yellow	Violet
9	Very Light Blonde	Yellow	Violet
8	Light Blonde	Yellow/Orange	Blue/Violet
7	Medium Blonde	Orange	Blue
6	Dark Blonde	Red/Orange	Blue/Green
5	Light Brown	Red	Green
4	Medium Brown	Red/Violet	Yellow/Green
3	Dark Brown	Violet	
2	Darkest Brown	Blue/Violet	
1	Black	Blue	

WORKING WITH UNDERTONES

Undertones are the unrefined warm tones exposed during the lifting process. Always consider the exposed undertones visible at the target level.

To counteract undertones, select a shade level with tonal value opposite to the undertone exposed at the target level shown on the color wheel. Remember, opposites neutralize.

To enhance undertones, select a shade with a tonal value similar to the undertone exposed at the target level shown on the color wheel.

FORMULATION GUIDELINES

- Determine your client's natural hair color level using the COLOR GELS Natural Warm (NW) family swatches found in the COLOR GELS swatchbook. Remember to consider: Percentage of gray / Hair texture and condition / Hair density.
- Determine the target color (final level and tone) desired by your client.
- Determine the undertone found at the target level (see Level System chart). Select the COLOR GELS shade and volume of developer needed to achieve the target color.
- Process at room temperature. **DO NOT USE HEAT.**

FORMULATION EXAMPLES:

FOR COVERING GRAY

- Natural Level: 4 medium brown / 75% - 100% gray
- Target Color: Level 6 dark blonde with natural tones
- Undertone at Level 6: red / orange
- Formula: 6NW Brandy + 20 volume Color Gels Developer

FOR LIFTING NATURAL PIGMENT

- Natural Level: 5 light brown / 0% gray
- Target Color: Level 7 medium blonde with natural tones
- Undertone at Level 7: orange
- Formula: 7NA Mirage + 20 volume Color Gels Developer

COLOR GELS DEVELOPER

COLOR GELS DEVELOPER is the ONLY developer recommended for use with COLOR GELS levels 1-10 and BLONDING GELS. To vary the results:

COLOR GELS DEVELOPER	LEVELS OF LIFT	USAGE	MINUTES
10 volume	up to 1	minimal lift	20
20 volume	up to 2	standard lift/gray coverage	30
30 volume	up to 3	additional lift	40
40 volume	3 +	maximum lift/Blonding Gels	45

GUIDELINES FOR COVERING GRAY HAIR

Coverage of gray hair is one of the services that clients request most often. To cover gray means to minimize the contrast between natural hair and gray hair. **For the most effective gray coverage, follow the Gray Graph below.**

- Determine your desired result (top row).
- Identify client's percentage of gray (left column).
- Follow the formula guideline to the intersection of top row and left column.
- Always mix COLOR GELS with an equal amount of the appropriate Color Gels Developer.

NOTE: To maintain the most control when covering gray, select a formula no more than two levels lighter than the natural hair. When using COLOR GELS Clear in your formulation, the deposit of tone will be reduced. COLOR GELS Clear is not to be used on clients with more than 25% gray.

% of gray	GREEN	NATURAL ASH	NATURAL	NATURAL WARM	NATURAL GOLD	WARM GOLD	RED / ORANGE	RED	RUBY BROWN	RED VIOLET
0% - 25%	GN only	NA only	N	1 1/2 oz. (45ml) NW + 1/2 oz. (15ml) NA	1 1/2 oz. (45ml) NG + 1/2 oz. (15ml) WG	1 1/2 oz. (45ml) WG + 1/2 oz. (15ml) NW	1 1/2 oz. (45ml) RO + 1/2 oz. (15ml) WG	1 1/2 oz. (45ml) R + 1/2 oz. (15ml) WG	RB	1 1/2 oz. (45ml) RV + 1/2 oz. (15ml) NW
25% - 50%	1 1/2 oz. (45ml) GN + 1/2 oz. (15ml) NW or N	1 1/2 oz. (45ml) NA + 1/2 oz. (15ml) NW	N	NW	1 1/4 oz. (37.5ml) NG + 3/4 oz. (22.5ml) WG	WG	1 1/4 oz. (37.5ml) RO + 3/4 oz. (22.5ml) WG	1 1/4 oz. (37.5ml) R + 3/4 oz. (22.5ml) WG	RB	1 1/4 oz. (37.5ml) RV + 3/4 oz. (22.5ml) NW
50% - 75%	1 oz. (30ml) GN + 1 oz. (30ml) NW or N	1 oz. (30ml) NA + 1 oz. (30ml) NW	N	NW	1 oz. (30ml) NG + 1 oz. (30ml) WG	WG	1 oz. (30ml) RO + 1 oz. (30ml) WG	1 oz. (30ml) R + 1 oz. (30ml) WG	RB	1 oz. (30ml) RV + 1 oz. (30ml) NW
75% - 100%	1/2 oz. (15ml) GN + 1 1/2 oz. (45ml) NW or N	1/2 oz. (15ml) NA + 1 1/2 oz. (45ml) NW	N	NW	1/2 oz. (15ml) NG + 1 1/2 oz. (45ml) WG	WG	1/2 oz. (15ml) RO + 1 1/2 oz. (45ml) WG	1/2 oz. (15ml) R + 1 1/2 oz. (45ml) WG	RB	1/2 oz. (15ml) RV + 1 1/2 oz. (45ml) NW

MIXING AND PROCESSING

Mix COLOR GELS shades in a 1:1 ratio of color to Color Gels Developer. For example, mix 2 oz. (60ml) of COLOR GELS and 2 oz. (60ml) of Color Gels Developer. Always use immediately after mixing.

Processing time varies depending on the volume of developer used (see chart). Process at room temperature. **DO NOT USE HEAT.**

Mix BLONDING GELS in a 1:2 ratio with 40 volume Color Gels Developer. **Example:** Mix 1 oz. (30ml) BLONDING GELS + 2 oz. (60ml) 40 volume Color Gels Developer. Always use immediately after mixing. Process for up to 45 minutes at room temperature. **DO NOT USE HEAT.**

NOTE: BLONDING GELS are NOT intermixable with other COLOR GELS levels (1-10) shades.

BLONDING GELS

FPO	FPO	FPO	FPO
I - blue level 5	II - blue-violet level 6	III - violet level 7	Clear level 5

Swatches shown on natural level

COLOR GELS



Swatch shown on natural level

GET INSPIRED. BE PART OF IT.
REDKEN.COM

REDKEN
5TH AVENUE NYC