



The CALEDONIAN

A WALDORF ASTORIA® HOTEL

A WARM WELCOME AWAITS YOU AT
THE CALEDONIAN, A WALDORF ASTORIA™ HOTEL

The Caledonian, A Waldorf Astoria Hotel, known locally as the “Caley”, is one of Edinburgh’s most significant landmarks. Standing proudly at the west end of Princes Street, the artery of the capital, its reputation for style and excellence has attracted generations of locals, international visitors and notable personalities for over one hundred years.

Following extensive refurbishment in all areas of the hotel, this reputation is continued and enhanced as The Caledonian re-opens its doors as a member of Waldorf Astoria Hotels & Resorts, who set the standard in finest hotels and resorts worldwide.



The Hotel Lobby



Hotel lobby and grand staircase

EDINBURGH, A TRULY INTERNATIONAL CITY

Scotland's capital is rich in historic buildings and monuments, the mediaeval Old Town being a UNESCO World Heritage Site. Edinburgh is famous for its year round calendar of events, the highlight being the Edinburgh International Festival and Fringe in August, which has launched the careers of many famous artistes.

The city lies within easy reach of two of the world's premier golf courses. Muirfield, host of The Open, lies a few miles west along the coast from Edinburgh overlooking the Firth of Forth. Gleneagles, about an hour's drive to the north is host of The Ryder Cup.



Peacock Alley

PEACOCK ALLEY

Located at the heart of the hotel, and inspired by the grand social promenade that connected the original Waldorf and Astoria hotels in New York, Peacock Alley is a place for guests and locals “to see and be seen”.

The epitome of elegance and sophistication, Peacock Alley is the hub of the hotel’s social scene for afternoon tea and cocktail time. Its experienced team craft all of the classic and exclusive signature Waldorf Astoria cocktails; here is to be found the essence of the unique and unforgettable Waldorf Astoria experience.

Peacock Alley combines the grandeur and exclusivity of the great hotels of yesteryear with all the modern amenities and conveniences of today’s connected living.

Drinks and meals are available all day, including traditional breakfasts, delicate small platters, an à la carte lunch menu, and traditional afternoon tea.

For more information or to make a reservation please call 0131 222 8905 or email: afternoontea.reservations@waldorfastoria.com





THE POMPADOUR BY GALVIN

It takes its name from the celebrated Madame de Pompadour, the “favourite mistress” of King Louis XV of France, who installed her in the magnificent Palace at Versailles. The listed interior décor reflects the sumptuousness of the royal court of the day, and the restaurant has long enjoyed the reputation of having “the best tables” in Edinburgh, with impressive views looking out onto Princes Street and Edinburgh Castle through the panoramic arched windows.

The
POMPADOUR
by Galvin

Having been restored to its former splendour, the Pompadour by Galvin continues its tradition of classical French excellence under the guidance of the Galvin brothers.

Few renowned chefs have done more to perpetuate and revitalise the traditions of classical French cuisine than Chris and Jeff Galvin. In the course of their careers, from commis chefs to restaurateurs, they have learnt their craft in some of the most famous restaurants in the world, working alongside many master chefs who have since become household names and celebrities.

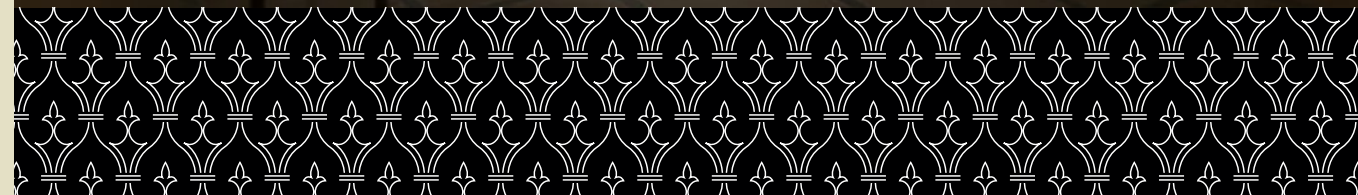
For more information or to make a reservation please call 0131 222 8975
or email: pompadour.reservations@waldorfastoria.com

GALVIN BRASSERIE DE LUXE

Galvin Brasserie de Luxe offers a number of dining options suited to entertaining and socialising, business gatherings, discreet one-to-one meetings, or even parties. At the centre is a large oval bar with seafood counter for light lunching or whetting the palate prior to dining, and the ideal place for single diners. The Salon Privé can be booked for private dining for up to 16 guests or a stand up cocktail party for up to 30. Or simply be served at your table.

Created by the Galvin brothers, the menu features a blend of classic French brasserie favourites and local seasonal specialities, to include Prix Fixe, plats du jour, Scottish Crustacea and a la carte menus. The kitchen is overseen by award-winning executive chef Craig Sandle.

For more information or to make a reservation please call 0131 222 8988 or email: brasserie.reservations@waldorfastoria.com



The Caley Bar



THE CALEY BAR

A popular meeting place for residents and the local population alike for many generations, The Caley Bar offers a traditional Scottish welcome in elegant and relaxed surroundings. The design of the carefully refurbished Caley is themed on the grandeur of the Caledonian Railway of the 19th Century, with overtones of the plush furnishings of the Orient Express.

The Caley is the ideal venue for drinks after work or before a meal, when the bar buzzes with lively conversation and laughter. Choose from classic cocktails, a wide range of Scotch Whiskies, fine wines and Champagnes, soft drinks and hot beverages.

The Caley Bar is the unique meeting point of Edinburgh's Old Town, New Town and West End, so expect both the conversation and the clientele to be stimulating as well as jovial.



The Caley Bar Lounge

**THE
CALEY
BAR**

INDULGE AT THE GUERLAIN SPA

The Guerlain Spa offers pampering and treatments for men and women, for reviving and healing, or just for pure indulgence. A sanctuary of luxury and relaxation, this exclusive spa will leave you refreshed and invigorated, according to the treatment that you select.

For more information or to book an appointment please call 0131 222 8836 or visit www.guerlainspaedinburgh.com

GUERLAIN
— SPA —
WALDORF ASTORIA®



Manicure Room



Spa Reception



Relaxation Room



Treatment Room



Deluxe double bedroom



Queen Classic room



King Junior Suite Lounge

ROOMS WITH ELEGANCE AND CHARM

At the Caledonian, the comfort of our guests is of paramount importance, a commitment that is reflected in the quality and finish of our bedrooms and suites. Each of our 241 guest rooms has been luxuriously renovated using only the finest fabrics, fittings and furniture. With extensive views over the city – including some with spectacular views of the imposing castle – each air-conditioned room benefits from WIFI connectivity, flat screen television and Nespresso coffee machine. The hotel is 100% non-smoking.



Castle Suite



Boardroom



Boardroom



Versailles Suite

GATHERINGS & OCCASIONS

The Caledonian, A Waldorf Astoria Hotel is one of the most splendid venues Edinburgh has to offer for meetings, conferences and events. With a total of ten private rooms to choose from, we can provide layouts to suit every occasion: from seminar rooms and classrooms through theatre, cabaret style and banquet, to a reception for up to 500 guests.

Entertain your guests against the sumptuous backdrop of panelled walls and stunning murals. Our dedicated events management team will help with every detail of the planning of your event to make it a success and truly memorable.

WHERE TO FIND US

The Caledonian, A Waldorf Astoria Hotel
Princes Street, Edinburgh, EH1 2AB


Tel: +44 131 222 8888


Fax: +44 131 222 8889

Web: thecaledonianedinburgh.com

Email: guest_caledonian@waldorfastoria.com



 [facebook.com/caledonianedinburgh](https://www.facebook.com/caledonianedinburgh)

 twitter.com/hotelcaledonian



WALDORF
ASTORIA®
HOTELS & RESORTS

WALDORF ASTORIA

*represents an array of hotels
and resorts combining breathtaking surroundings
and legendary personalised service. Each luxury
hotel is a classic in its own right, known for
its inspiring architecture, authentic history,
and luxurious guest rooms. Each one has its
own distinct personality and allure. And each
one offers amenities and services worthy
of the name Waldorf Astoria.*

The Caledonian, A Waldorf Astoria Hotel, Princes Street, Edinburgh, EH1 2AB
Tel: +44 131 222 8888 Fax: +44 131 222 8889 Email: guest_caledonian@waldorfastoria.com
Web: thecaledoninedinburgh.com